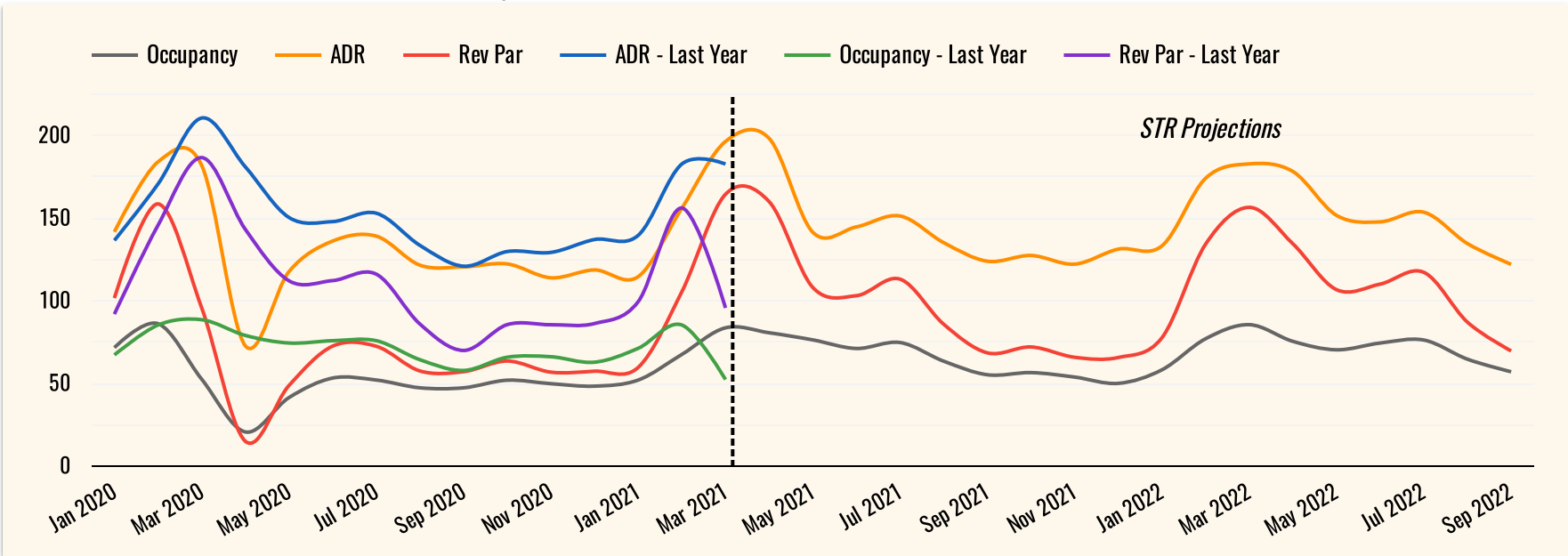


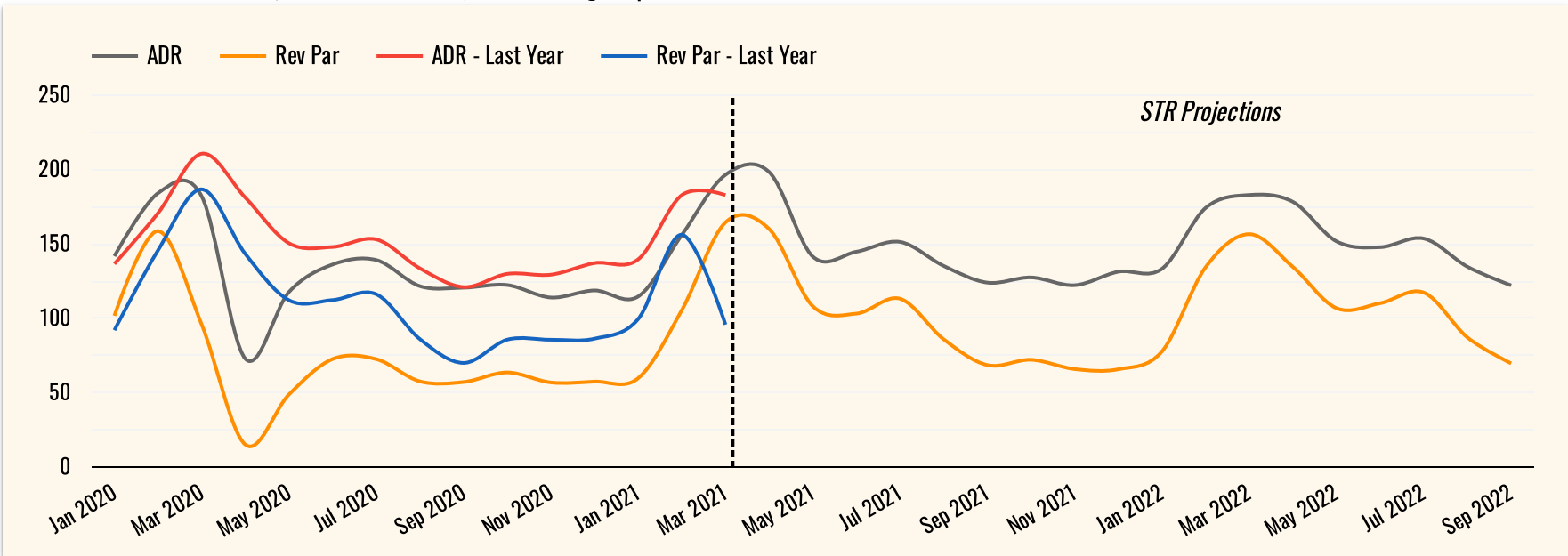
Hotel Forecast



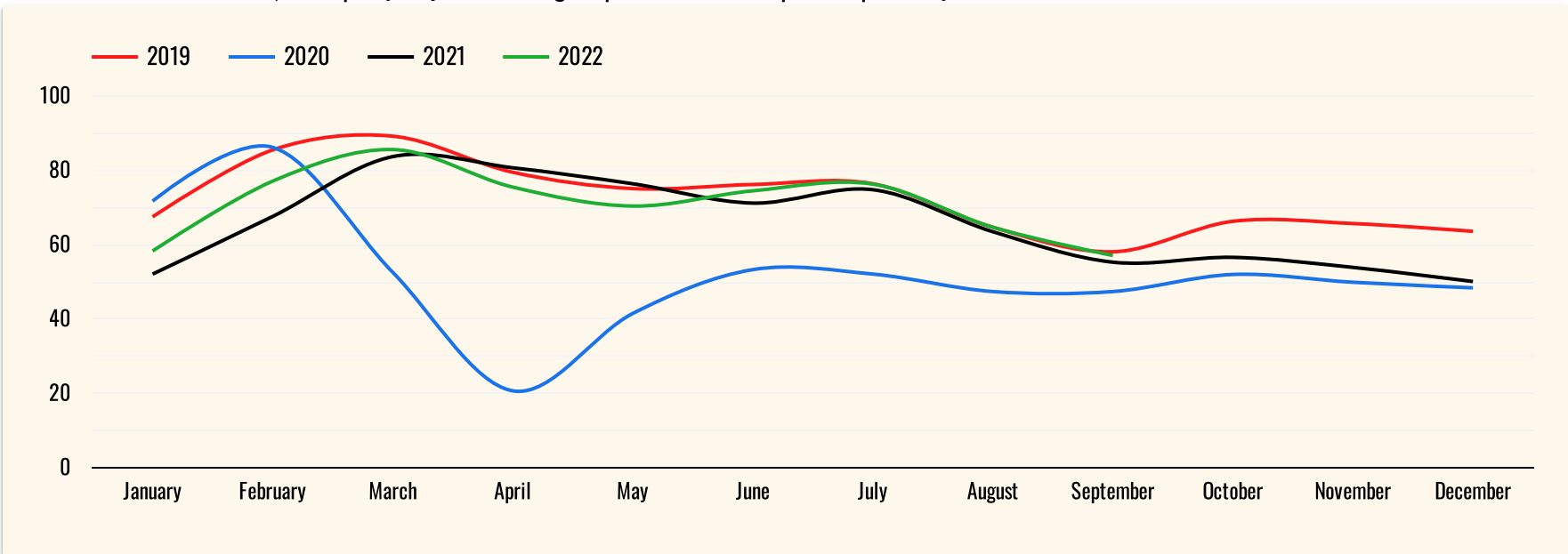
STR Custom Forecast 2021 Q1 Projections through September 2022



STR Custom Forecast 2021 Q1 ADR & RevPAR Projections through September 2022



STR Custom Forecast 2021 Q1 Occupancy Projections through September 2022 compared to previous years



Hotel Forecast

Last 3 months & upcoming 3 months totals - as of 6/6/21

Mar 1, 2021 - Aug 31, 2021

Month	Occupancy	Occupancy % Change - 2020	2019 Occupancy	Occupancy % Change - 2019	Leisure Room Nights	Leisure % Change	Group Room Nights	Group % Change
Mar 2021	87.3%	90.1%	89%	0.4%	199,231	103.8%	15,838	3.18%
Apr 2021	84.4%	804.6%	81%	5.6%	177,167	740.8%	24,457	2,002.92%
May 2021	78.8%	141.3%	77%	3.7%	177,334	125.2%	16,653	900.78%
Jun 2021	67.1%	118.5%	78%	-12.3%	136,524	96.5%	19,720	428.97%
Jul 2021	40.0%	81.7%	80%	-48.7%	71,560	65.1%	11,529	5.63%
Aug 2021	17.1%	51.7%	69%	-74.7%	25,118	49.0%	5,473	-49.5%

Occupancy data is current as of this date, meaning that any data in the report reflects reservations that were in the hotels' systems on this date.

Group reservations are rooms sold as part of a negotiated commitment of 10+ rooms for similar stay dates (e.g. wedding block).

Leisure reservations are rooms sold not part of a group reservation.

