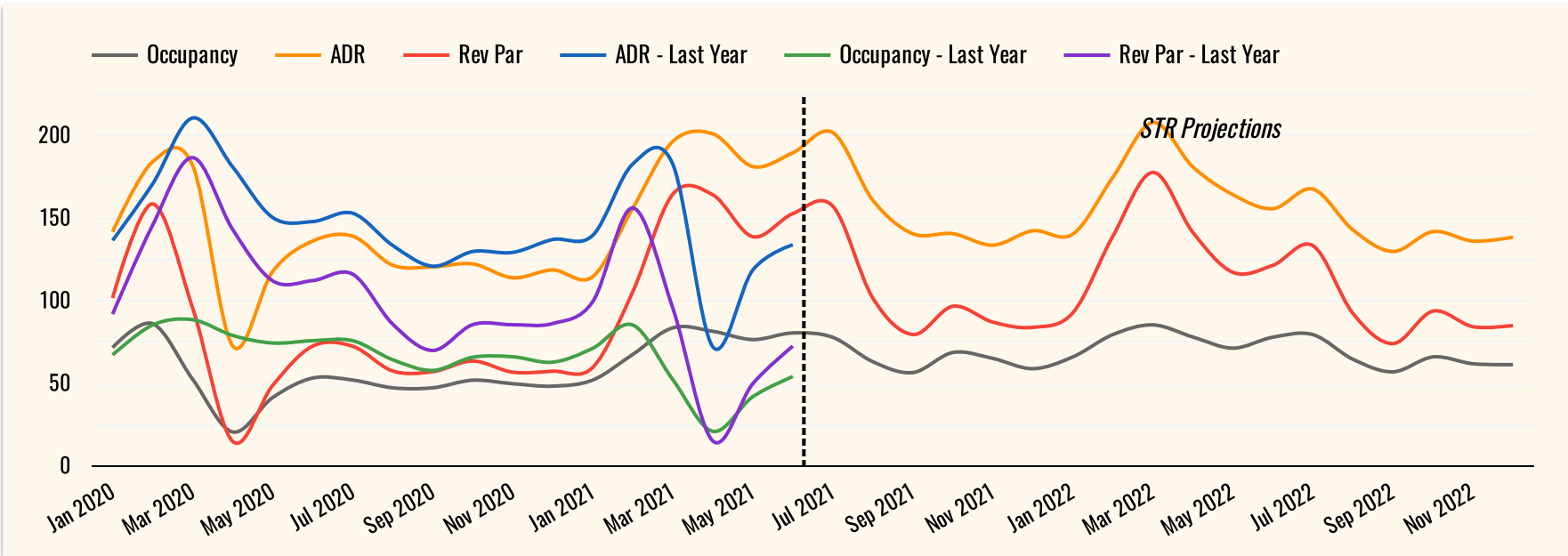


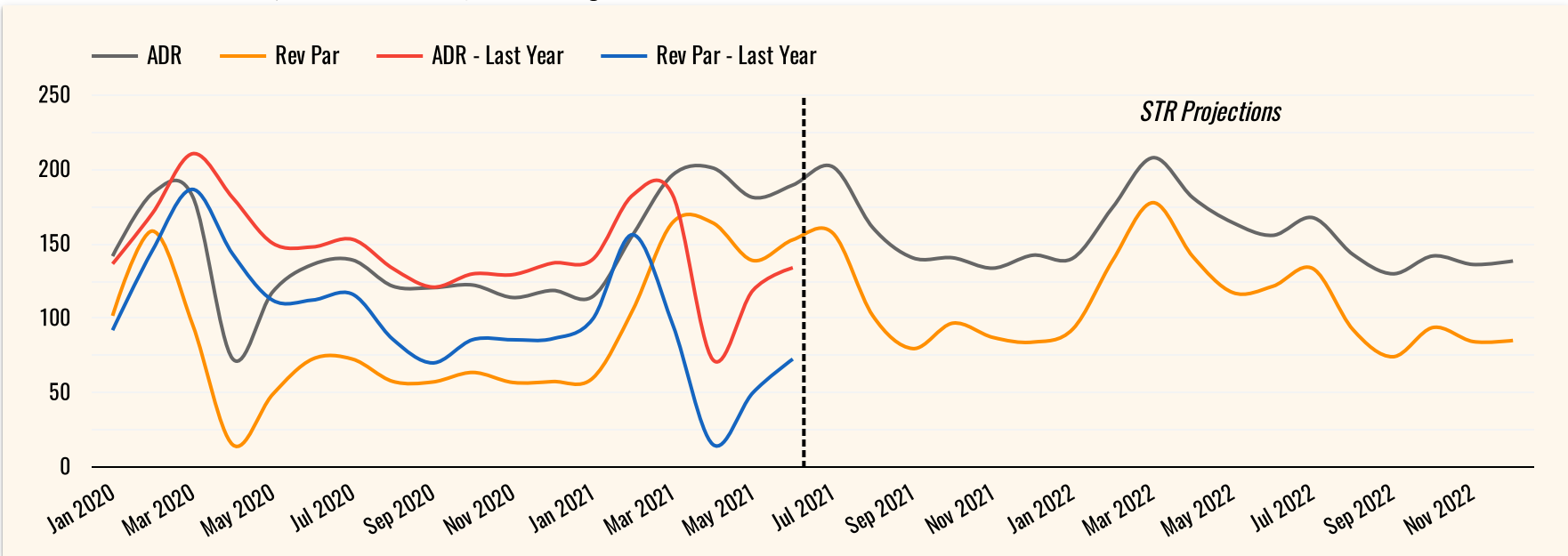
Hotel Forecast



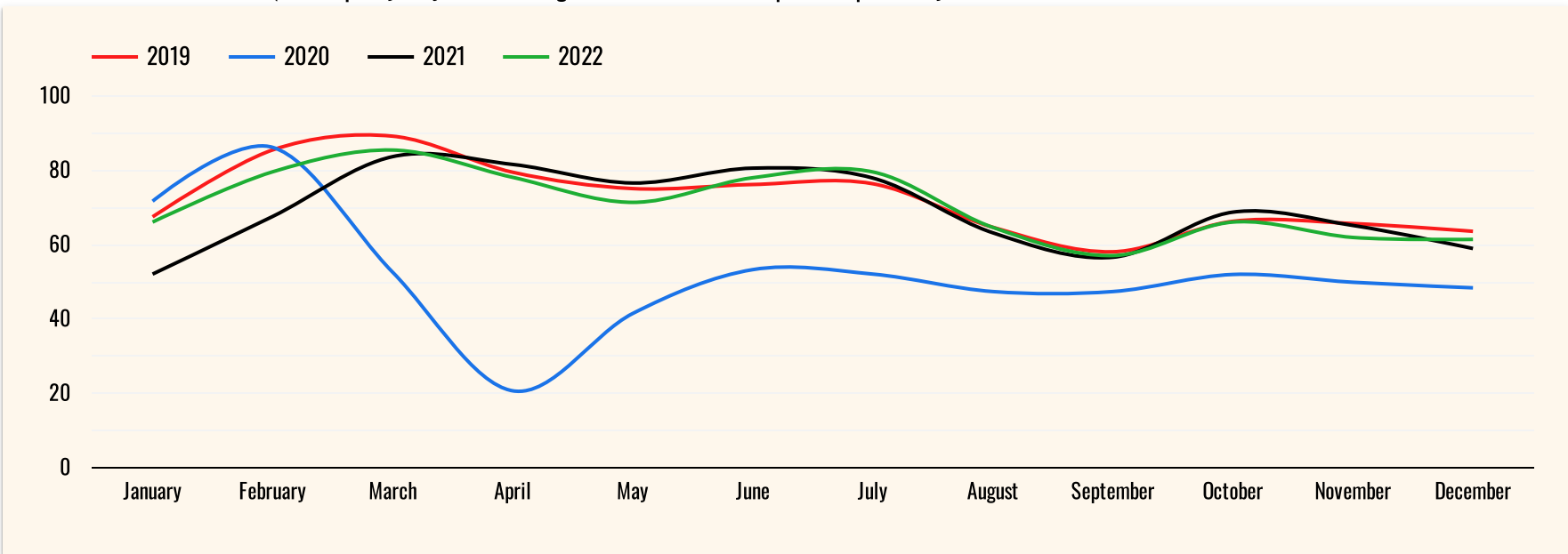
STR Custom Forecast 2021 Q2 Projections through December 2022



STR Custom Forecast 2021 Q2 ADR & RevPAR Projections through December 2022



STR Custom Forecast 2021 Q2 Occupancy Projections through December 2022 compared to previous years



Hotel Forecast

Last 3 months & upcoming 3 months totals - as of 8/1/21

May 1, 2021 - Oct 31, 2021

Month	Occupancy	Occupancy % Change - 2020	2019 Occupancy	Occupancy % Change - 2019	Leisure Room Nights	Leisure % Change	Group Room Nights	Group % Change
May 2021	78.5%	139.7%	77%	5.1%	179,365	124.6%	16,737	902.22%
Jun 2021	83.5%	72.4%	77%	11.2%	181,074	58.6%	20,824	723.41%
Jul 2021	81.1%	63.3%	81%	3.2%	179,542	56.9%	22,907	148.4%
Aug 2021	42.0%	102.1%	66%	-34.1%	83,515	105.7%	16,680	49.69%
Sep 2021	24.9%	116.9%	61%	-58.0%	31,592	90.3%	13,583	23.01%
Oct 2021	27.9%	65.7%	67%	-57.8%	28,670	61.3%	15,486	-35.97%

Occupancy data is current as of this date, meaning that any data in the report reflects reservations that were in the hotels' systems on this date.

Group reservations are rooms sold as part of a negotiated commitment of 10+ rooms for similar stay dates (e.g. wedding block).

Leisure reservations are rooms sold not part of a group reservation.

