

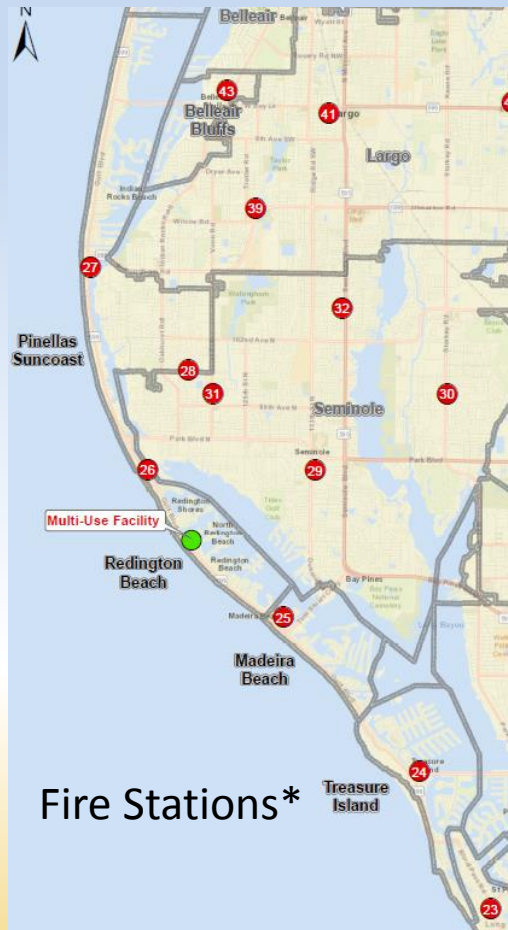
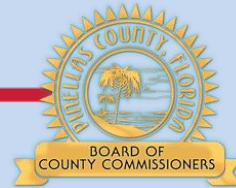


Doing Things!

**Platform for Partnership
Public Safety- Multi-Purpose Facility
The Redingtons**



Fire Districts and Stations

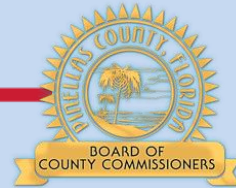


Present Station (EMS & Fire)
Locations are not optimal

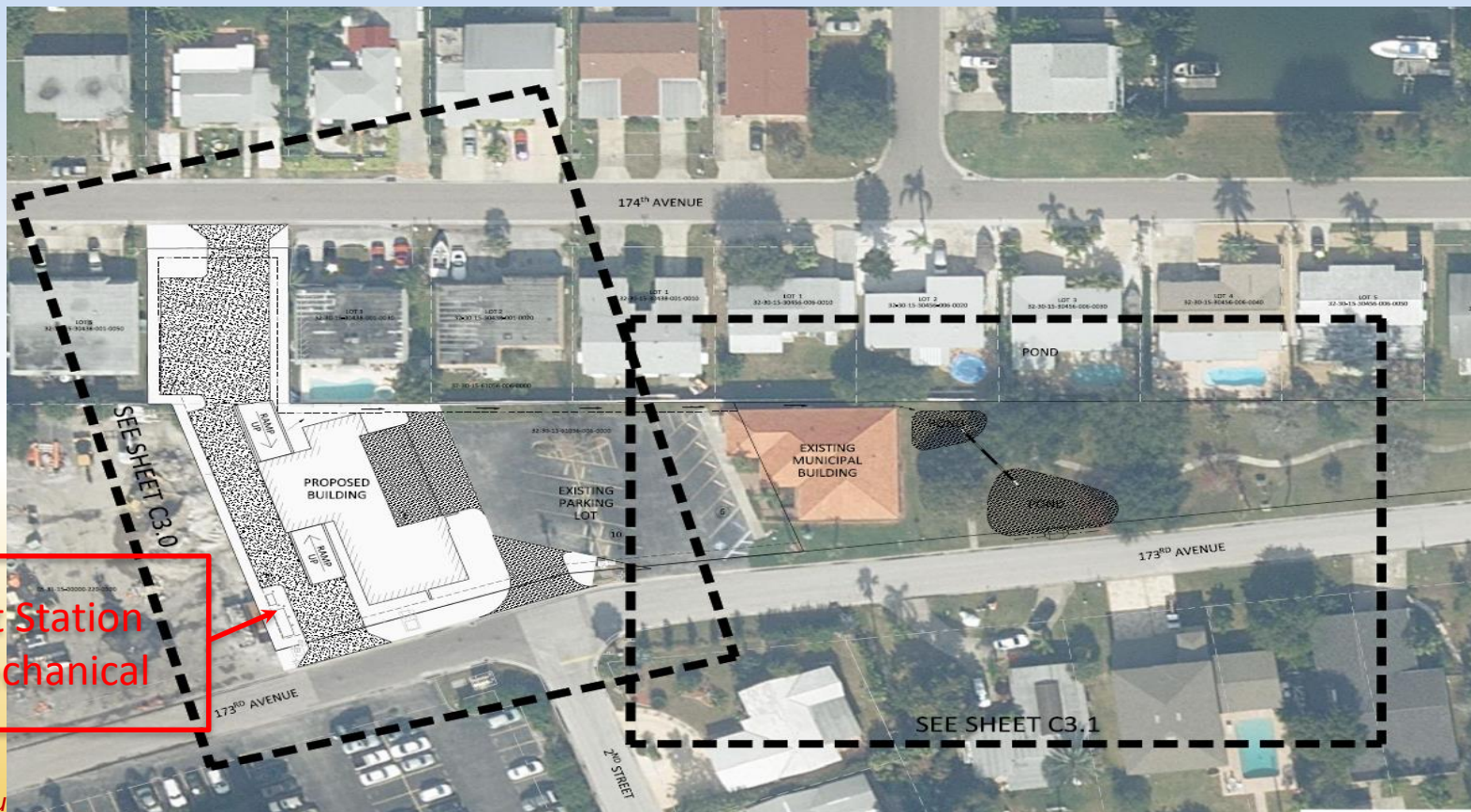
County Sewer Pump Station-
Planned Rehabilitation

St 26 is currently a leased room and not a fire station

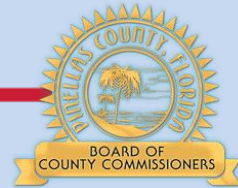
Proposed Solution



Partner with the “Redingtons” to Construct a Multi-Purpose Facility

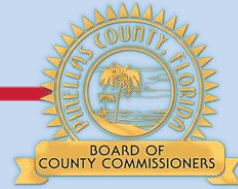


Why



- Enhanced Service Delivery
 - Improved EMS Response Times
 - Redingtons
 - Indian Shores
- Optimal Location
 - Enables Strategic Relocations for future Station Replacements
- Accommodates EMS unit & Fire
- Location for Sheriff's Office
- Replacement of County Sewer Pump Station
- A model for future partnerships

Services to the Public



■ County Services

- Emergency Medical Services
 - EMS service provider is typically Fire Service provider
 - Permanent Location for response team



- Utilities
 - Sewer Lift Station Replacement

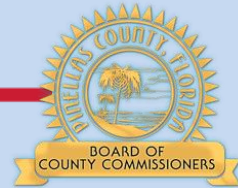
- Pinellas County Sheriff's Office
 - Office on site



■ Municipal Services

- Fire
 - Allows for Deployment Options
 - Current contract providers- Madeira Beach and Seminole
- Public Works
 - Offices and Equipment Storage
- Community Room
 - 600 Sq. foot multi-purpose meeting room

Funding



- Multi-use Building (Approx. \$2-2.5M)
 - Cost Share*County 80%, Redington's 20% (\$2M construction costs)
- Lift Station \$2.5M
 - Sewer System Responsibility
- Recurring O&M
 - Cities
- Building Structure & Major Mechanical
 - County

* Based upon Fire/EMS Call Ratio