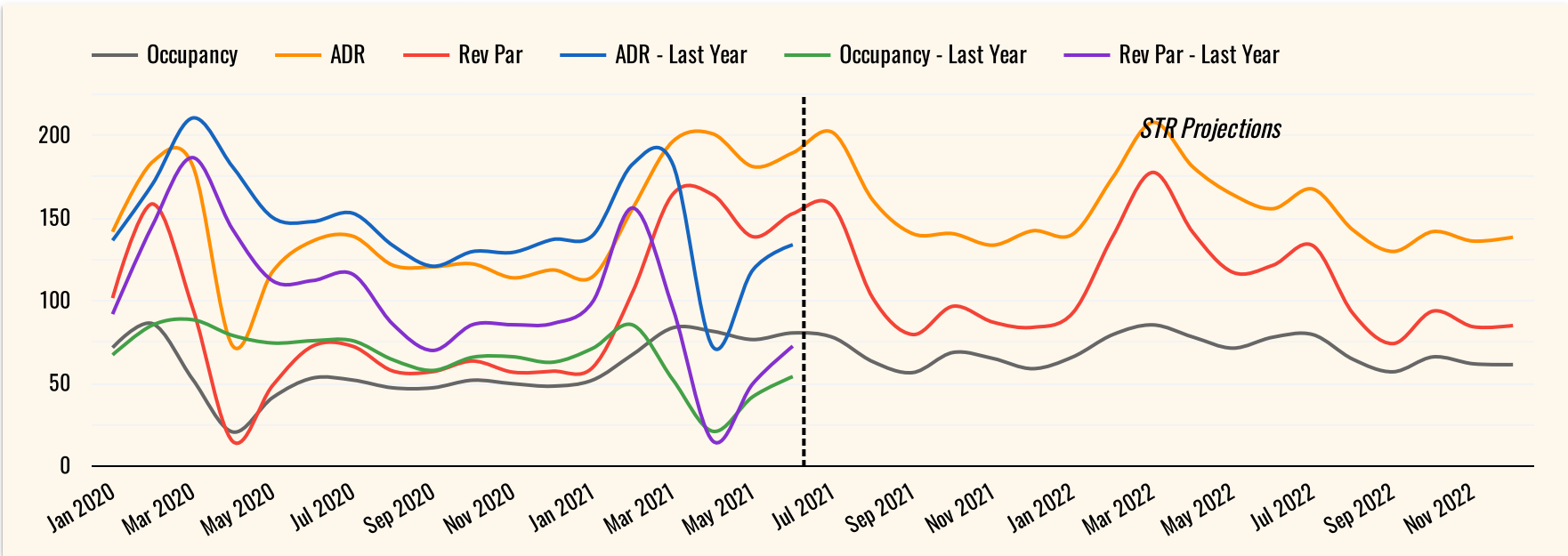


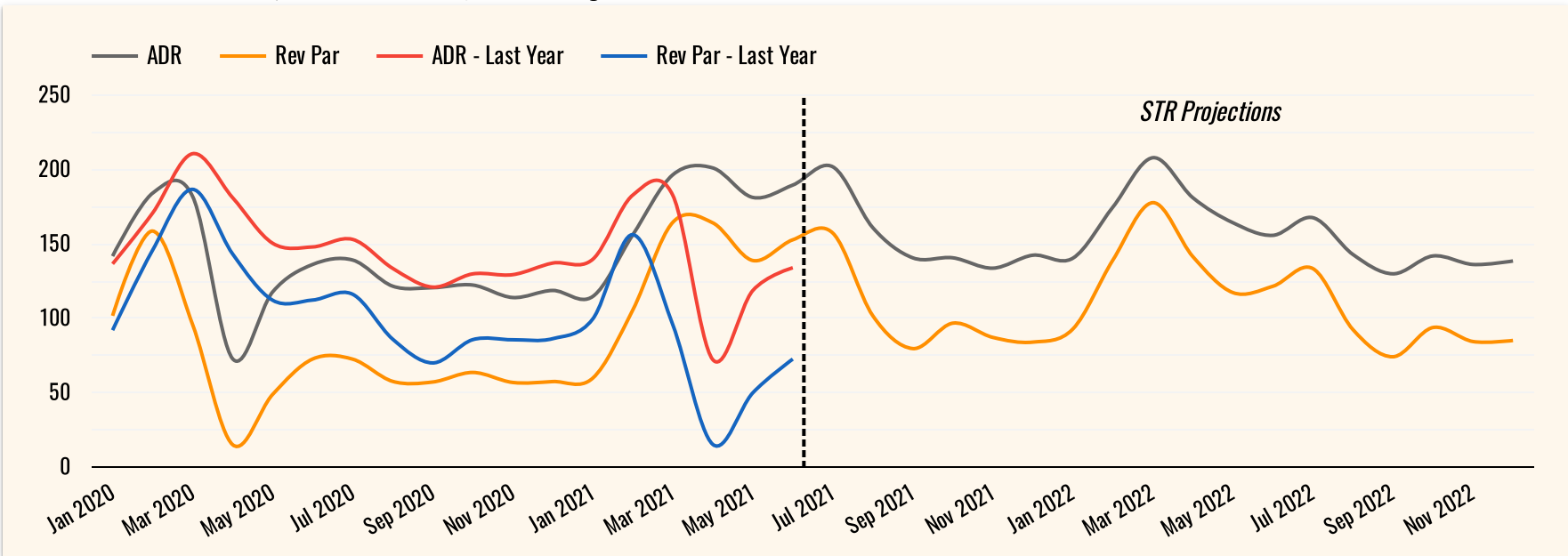
# Hotel Forecast



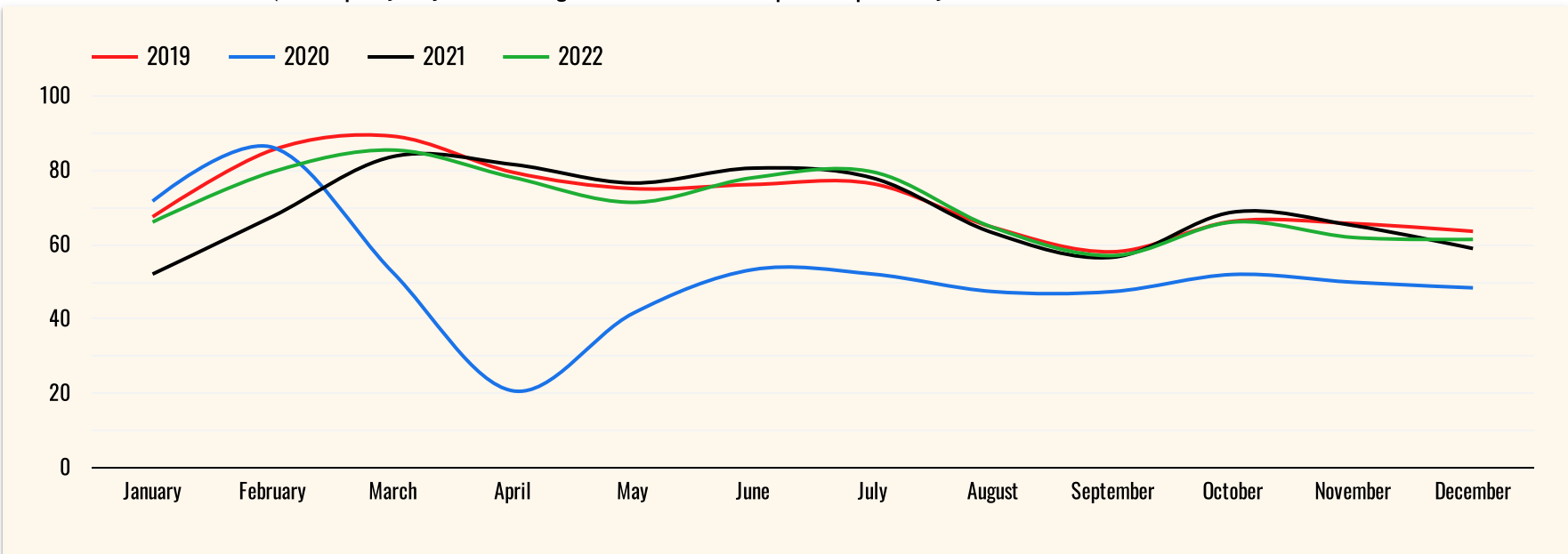
STR Custom Forecast 2021 Q2 Projections through December 2022



STR Custom Forecast 2021 Q2 ADR & RevPAR Projections through December 2022



STR Custom Forecast 2021 Q2 Occupancy Projections through December 2022 compared to previous years



# Hotel Forecast

Last 3 months & upcoming 3 months totals - as of 11/03/21

Aug 1, 2021 - Jan 31, 2022

Month	Occupancy	Occupancy % Change - 2020	2019 Occupancy	Occupancy % Change - 2019	Leisure Room Nights	Leisure % Change	Group Room Nights	Group % Change
Aug 2021	61.7%	40.3%	66%	-3.9%	135,806	37.9%	15,884	57.02%
Sep 2021	57.5%	28.5%	61%	-3.7%	117,437	18.3%	20,191	164.49%
Oct 2021	64.1%	30.5%	67%	-3.9%	131,693	18.8%	33,301	219.68%
Nov 2021	46.4%	67.5%	65%	-28.6%	74,807	43.2%	29,301	110.71%
Dec 2021	26.4%	67.6%	67%	-61.2%	44,387	59.9%	8,901	-19.82%
Jan 2022	19.1%	56.1%	71%	-73.4%	16,335	62.0%	6,960	-65.38%

Occupancy data is current as of this date, meaning that any data in the report reflects reservations that were in the hotels' systems on this date.

Group reservations are rooms sold as part of a negotiated commitment of 10+ rooms for similar stay dates (e.g. wedding block).

Leisure reservations are rooms sold not part of a group reservation.

