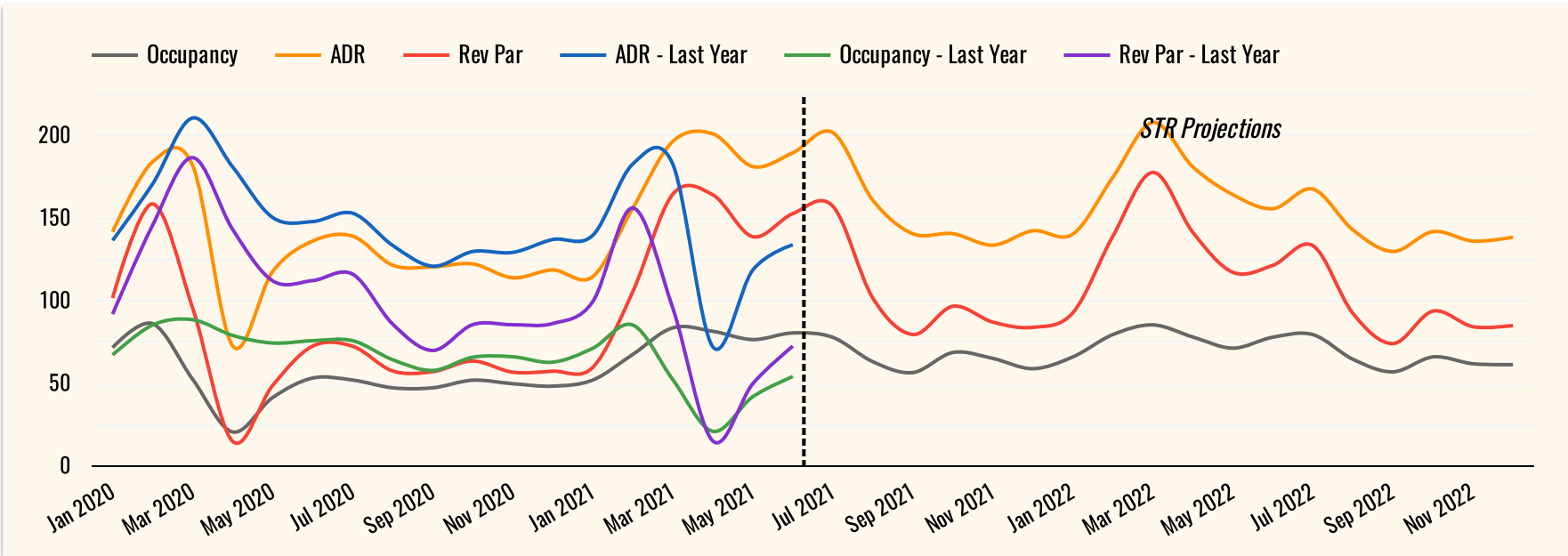


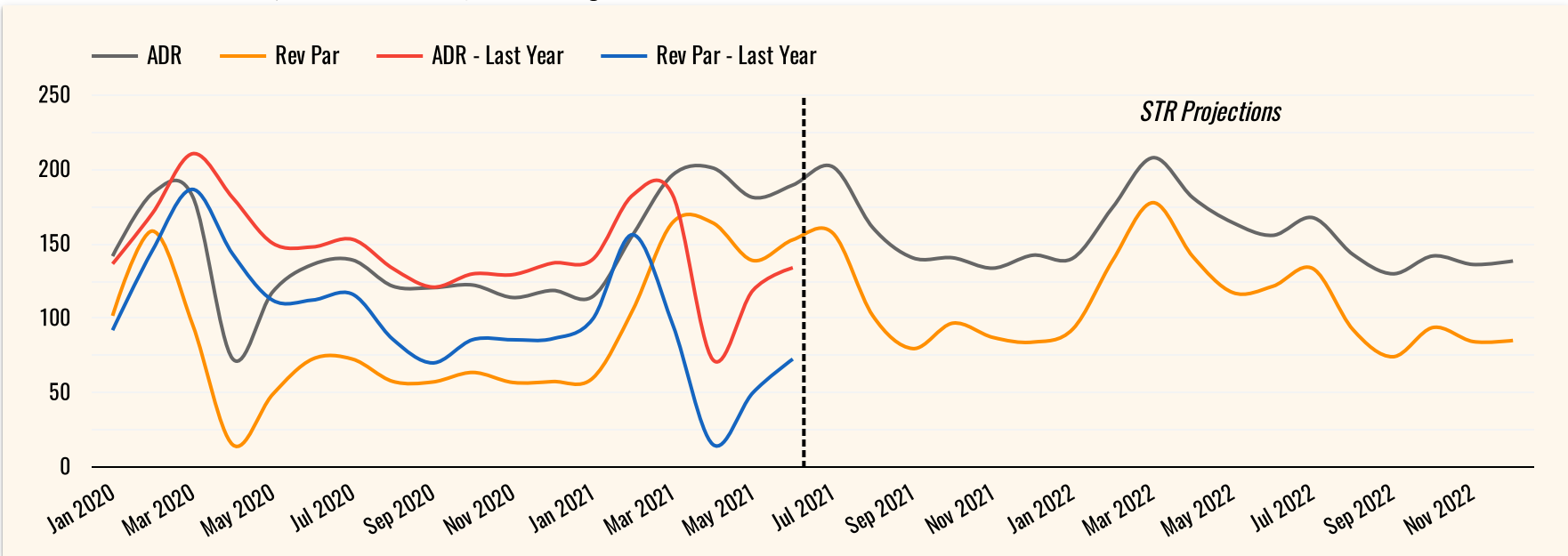
Hotel Forecast



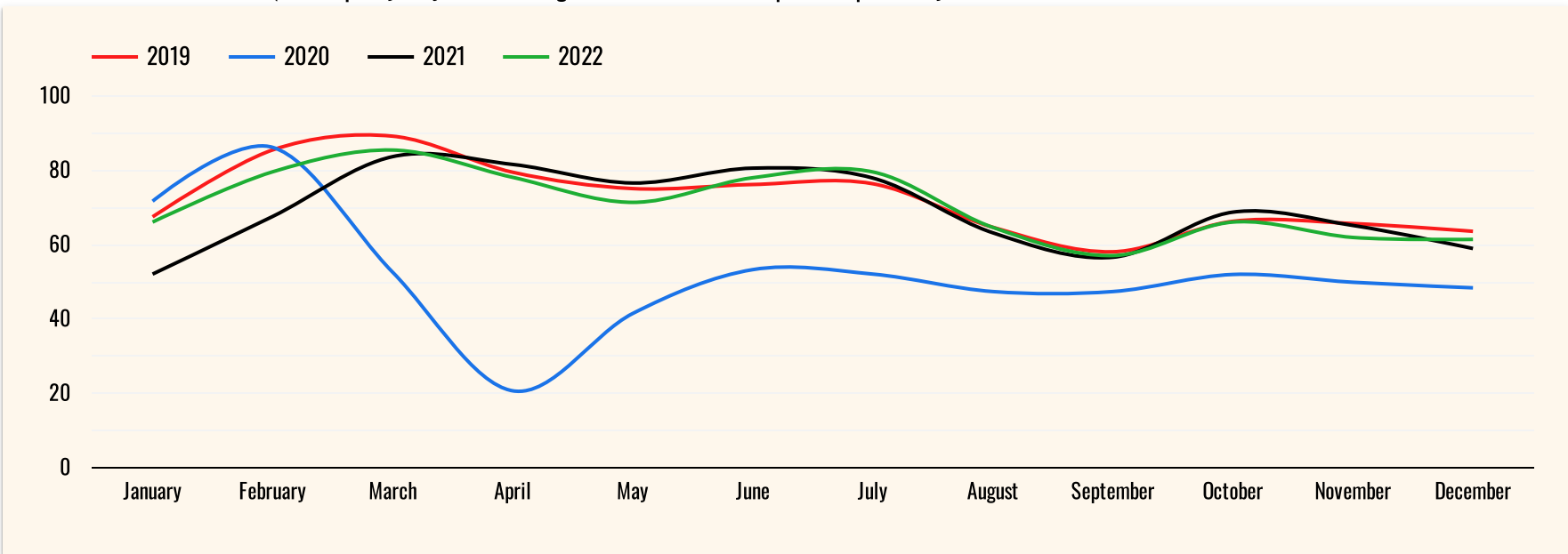
STR Custom Forecast 2021 Q2 Projections through December 2022



STR Custom Forecast 2021 Q2 ADR & RevPAR Projections through December 2022



STR Custom Forecast 2021 Q2 Occupancy Projections through December 2022 compared to previous years



Hotel Forecast

Last 3 months & upcoming 3 months totals - as of 10/10/21

Jul 1, 2021 - Dec 31, 2021

Month	Occupancy	Occupancy % Change - 2020	2019 Occupancy	Occupancy % Change - 2019	Leisure Room Nights	Leisure % Change	Group Room Nights	Group % Change
Jul 2021	81.9%	64.7%	81%	3.3%	178,636	58.0%	22,847	136.58%
Aug 2021	61.7%	40.3%	66%	-3.9%	135,806	37.9%	15,884	57.02%
Sep 2021	57.5%	28.5%	61%	-3.8%	117,349	18.2%	20,279	165.64%
Oct 2021	56.3%	55.4%	67%	-15.7%	100,264	30.9%	33,062	158.72%
Nov 2021	34.4%	87.6%	65%	-47.1%	43,382	56.2%	17,695	10.38%
Dec 2021	19.8%	63.1%	67%	-70.9%	29,943	58.0%	4,891	-55.51%

Occupancy data is current as of this date, meaning that any data in the report reflects reservations that were in the hotels' systems on this date.

Group reservations are rooms sold as part of a negotiated commitment of 10+ rooms for similar stay dates (e.g. wedding block).

Leisure reservations are rooms sold not part of a group reservation.

